

Suranaree University of Technology (SUT) was founded as a university specialized in Science and Technology in 1990. It is Thailand's first state autonomous university, which has its own systems of administration, finance, academic affairs, and general management. Important principles of the autonomous university are high levels of independence, flexibility and efficiency for all missions. SUT is located in Nakhon Ratchasima province, about 260 km northeast of Bangkok. The campus covers sizable 1,120 hectares, including academic zone, Technopolis, residential facilities for staff and students, the Surasammanakhan Convention Center, and the university farm. University facilities include the Center for Library Resources, the Center for Scientific and Technological Equipment, the Center for Computer Services, the Center for Educational Services, the Institute of Research and Development, the Education Media Development and Production Unit, the Sport and Health Center, university dormitories, a medical clinic, a book center, a bank, a post office, convenience stores, and free transportation on campus.



The Program of Biomedical Science is a large, multidisciplinary program, offered by the School of Biology, in the institute of Science of SUT. Members of the program are involved in research spanning a broad range of disciplines. A major strength of the program is the concerted effort to bridge traditional disciplinary boundaries in their research. The aim of the program is to develop in its students a through understanding of biomedical principles and specific problems relating to human health, and to enhance the capacity of these students to become involved directly in addressing and solving some of the significant and complex problems related to health science. Being an autonomous university, we are able to acquire highly sophisticated research equipments. Many high-performance biological analysis and determination facilities are available in our school and the Center for Scientific and Technological Equipment as well as other schools at SUT.

CURRENT RESEARCH AREAS

- Anatomy, Physiology, and Structural Biology
- Cellular and Molecular Medicine
- Host/Pathogen Interactions
- Pathobiology
- Pharmacology and Toxicology
- Stem Cell Biology and Gene Therapy

MEMBER STAFFS



- **Associate Professor Dr. Korakod Indrapichate**
Ph.D. (Molecular Biology) Lehigh University, Pennsylvania, USA
Expertise: Molecular Cell Biology

- **Associate Professor Dr. Tassanee Sukosol**
Ph.D. (Trop. Med. in Microbiology & Immunology)
Mahidol University, Thailand
Expertise: Microbiology and Immunology,
Molecular Biology



- **Assistant Professor Dr. Griangsak Eumkeb**
Ph.D. (Pharmacology) The Robert Gordon University, UK
Expertise: Pharmacology, Pharmacy, Medicinal Plants

- **Assistant Professor Dr. Benjamart Chitsomboon**
Ph.D. (Toxicology) Utah State University, USA
Expertise: Immunotoxicology, Immunopharmacology



- **Assistant Professor Dr. Nathawut Thanee**
Ph.D. (Ecological Entomology/Plant Health)
Massey University, New Zealand
Expertise: Insect Ecology, Freshwater Ecology and
Wetland Ecology, Ecosystem Analysis and Management

- **Assistant Professor Dr. Kornnika Khanobdee**
Ph.D. (Anatomy) Mahidol University, Thailand
Expertise: Retinal and Neuronal Degeneration,
Antioxidants, Oxidative Stress, and Apoptosis.



- **Assistant Professor Dr. Rungrudee Srisawat**
Ph.D. (Physiology) University of Edinburgh, UK
Expertise: Human Physiology, Neuroendocrinology,
Neuroscience



• **Assistant Professor Dr. Nuannoi Chudapongse**
Ph.D. (Pharmacology & Toxicology)
University of Mississippi Medical Center, USA
Expertise: Neuropharmacology, Cardiovascular Pharmacology

• **Assistant Professor Dr. Sajeera Kupittayanant**
Ph.D. (Physiology) University of Liverpool, UK
Expertise: Physiology, Endocrinology, Veterinary Medicine



• **Assistant Professor Dr. Wilairat Leeanasaksiri**
Ph.D. (Microbiology and Immunology),
Medical College of Virginia-Virginia Commonwealth University, USA
Expertise: Immunology, Allergy, Stem Cell Biology and Regulation, Cancer, Gene Therapy



• **Dr. Rachian Kosanlavit**
Ph.D. (Anatomy) Queen's University of Belfast, UK
Expertise: Radiation Biology, Human Anatomy



• **Dr. Pongrit Krubphachay**
Ph.D. (Molecular Genetics and Genetic Engineering)
Mahidol University, Thailand
Expertise: Molecular Genetics and Genetic Engineering



• **Dr. Nawarat Nantapong**
Ph.D. Bioresources Science (Applied Microbiology)
Tottori University, Japan
Expertise: Microbiology, Genetics and Genetic Engineering, Cell Metabolism



• **Dr. Sanong Suksaweang**
Ph.D. (Pathobiology)
University of Southern California Los Angeles, USA.
Expertise: Developmental Biology and Liver cancer, HIV/AIDS



• **Dr. Naruwan Saowakon**
Ph.D. (Anatomy) Mahidol University, Thailand
Expertise : Human Anatomy, Health sciences



INTERNATIONAL COLLABORATION

Several international collaborations have been developed in accordance with staff and student interests and research needs. The collaborations include exchange of academic staff and students. Several scientists from foreign countries regularly visit the school, assisting in the supervision of graduate students, giving seminars, and occasionally teaching graduate courses in their specialties. Our graduate students have high opportunities for studying and conducting researches in foreign countries. Currently, we have collaborations with the following international institutions:

- University of London, UK
- University of Edinburgh, UK
- The Royal Gordon University, UK
- Queen's University of Belfast, UK
- Liverpool John Moores University, UK
- Utah State University, USA
- University of Mississippi Medical Center, USA
- Virginia Commonwealth University, USA
- University of Liverpool, UK
- Massey University, New Zealand



SCHOLARSHIPS AND FINANCIAL AID

For qualified students, the following scholarships and financial aid are available:

- The Royal Golden Jubilee Ph.D. Scholarships (monthly salary: 8,000-10,000 baht, yearly research fund: 50,000 baht, expenses for 6-12 months study abroad: 500,000 baht, and tuition and other fees)
- SUT outstanding academic performance scholarships (monthly salary: 3,000 baht for M.Sc. and 4,000 baht for Ph.D. with an exemption of tuition, accommodation and other fees)
- SUT high potential student scholarships (exemption of tuition and other fees)
- SUT teaching and research assistantships (TA/RA, monthly salary: approximately 3,000 baht with 50% reduction of tuition fee)
- Research assistantships (monthly salary: 3,000-5,000 baht)
- SUT thesis support grants (30,000 baht for M.Sc. and 50,000 baht for Ph.D.)

EDUCATIONAL SYSTEM

All SUT graduate study programs follow the trimester system, in which each trimester consists of 13 weeks. The first trimester starts in June, the second in September, and the third in January. Application to the programs could be made at any time of the year.

TUITION AND OTHER FEES

Annual student fee	10,000 baht
Student activities fee	200 baht
Damage deposit (one-time fee)	6,000 baht
Tuition fee (per one credit)	1,500 baht

The total cost of graduate study at SUT, including the cost of living and books, amounts to approximately 120,000 baht per year.

HOW TO APPLY

Application forms can be downloaded from:
http://www.sut.ac.th/cia/Graduate_Admissions.htm.

To obtain further information about our programs, please contact the School of Biology:

tel: 0-4422-4633 or 0-4422-4192, fax: 0-4422-4633 or 0-4422-4185

e-mail: biology@sut.ac.th,

or visit our website: <http://www.sut.ac.th/science/biology/index.htm>

or : <http://web.sut.ac.th/gradbio>



CONTACT ADDRESS

School of Biology,
Institute of Science,
Suranaree University of Technology
111 University Avenue, Suranaree Subdistrict
Muang District, Nakhon Ratchasima 30000
Thailand

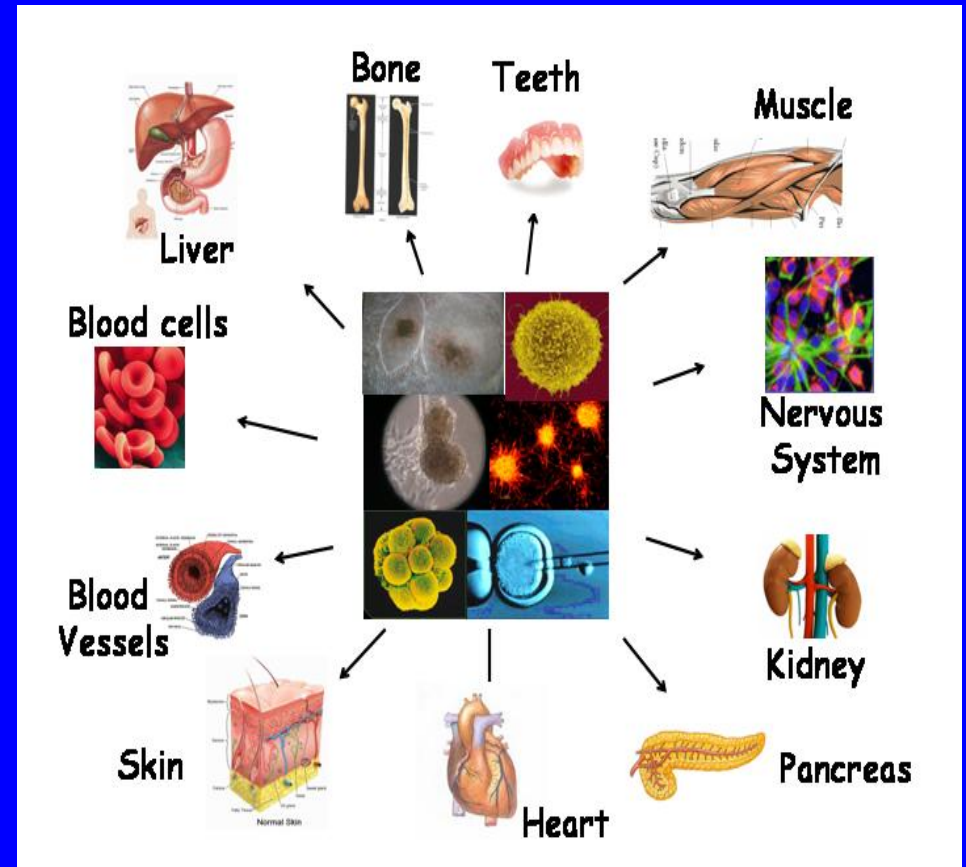
School Homepage:

<http://www.sut.ac.th/science/biology/index.htm>

University Homepage:

<http://web.sut.ac.th/gradbio>

GRADUATE STUDY PROGRAMS IN BIOMEDICAL SCIENCE



School of Biology
Institute of Science
Suranaree University of Technology